

Business Projection System

RICOH PJ WX4141N/ PJ WX4141NI

RICOH
imagine. change.



Ultra
Short
Throw
Projector

Projection
brightness up to
3,300lm

Tabletop,
Wall or
Ceiling
Mount

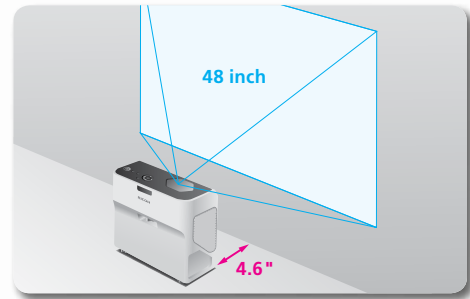
Compatible
PC/Mac

Precision and performance, up close and personal

When you're in the middle of a presentation, do you want your audience to notice the message or the projection system? The RICOH® PJ WX4141N/PJ WX4141NI packs cutting-edge innovations — including network connectivity, remote management and optional interactive features — into a space-saving footprint for more compelling, less distracting presentations. The ultra-short throw projector can be placed within inches of any flat, vertical surface in offices, classrooms and public spaces for bright, crisp displays up to 80 inches diagonal without shadows, noise or glare. Its compact, lightweight design simplifies transport, or you can easily mount it on a wall or set it on a table for everyday convenience. Use it to replace traditional whiteboards and make every presentation more interactive and engaging.

Bring clarity and convenience closer

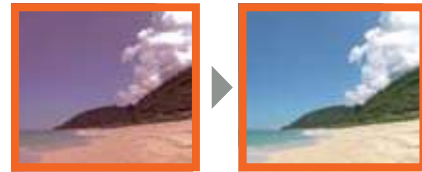
Turn any space into a multimedia showroom with the Ricoh PJ WX4141N/ PJ WX4141NI. Using innovative, free-form mirror technology, the projection system projects high-quality, high-definition images onto flat surfaces from only inches away (between 4.6" and 9.8"). It produces at least 3,300 lumens with 1280 x 800 WXGA resolution for exceptional clarity. Its prism surface controls light reflection and delivers greater contrast for crisper images. And, its innovative audio system lets you choose from multiple sensory modes (standard/narration/music), so you can provide more comfortable audio performance to accommodate different types of presentations.



Easy to make a big impact

The hard work should come before your next presentation — not during it. Whether you set the Ricoh PJ WX4141N/PJ WX4141NI on the edge of a table or near a wall, or have it permanently installed, simply plug it in and start the show. The projector will automatically detect keystone distortion and balance images for clarity. Presenters can manually adjust the colors of projected images in relation to the background color on the wall, whiteboard or blackboard. In addition, its intuitive control panel and handheld remote control let you navigate menu screens and access other innovative features without missing a beat during the presentation.

Wall Color Adjustment



Innovation on display

Interact effortlessly

Get your audience in on the action — and get traditional whiteboards and markers out of the way. The PJ WX4141NI transforms conventional screens into interactive whiteboards with Ricoh PJ Interactive Software. With it, presenters can share screens remotely, add notes directly to presentations and tailor every presentation, even when presenting to multiple audiences in multiple locations. For advanced interactive features, users can add Luidia eBeam® software — no external sensors or wires are necessary. Using DNLA, you can even project images from your smartphone or tablet as part of your presentation. In addition, the PJ WX4141N and PJ WX4141NI are designed to support paperless meetings via Apple® iPad®-based conferences with Ricoh's Smart Presenter app and Ricoh's Conference Center on-site server.



Manage conveniently

Make faster, stronger connections. Choose from LAN or wireless networking for easy configuration and operation. The projection system will search for available networks automatically, so you can connect to any Macintosh or Windows computer and be running in moments. Or, you can skip the PC altogether. Save files to a USB memory drive and take the presentation with you. Use the HDMI port to play movies from DVD and Blue-ray players — even those shot in 3D format. Ricoh's Web Image Monitor and embedded utility software let you configure settings and control functions remotely. Plus, it's certified for use with Crestron RoomView® and AMX NetLinX® conference control systems for incredible control of the projection system from any browser.



Communicate more effectively

The versatile Ricoh PJ WX4141NI is designed specifically to reach more people in more places. Facilitate a productive multimedia meeting in boardrooms, offices and even hallways. Engage audiences with interactive instructional multimedia displays in classrooms, laboratories and other locations. Connect to audio-visual equipment and show movies, events and more on the big screen. Or, grab the attention of viewers with vibrant and customizable digital signage that can be programmed to power on or off at any time automatically. Combine it with Ricoh's UCS P3000 videoconference system to present to and interact with remote audiences in multiple locations.



Model		PJ WX4141N	PJ WX4141NI
Projector Part Number		407471	407468
Replacement Lamp Part Number			512628
Replacement Air Filter Type 4			512269
3D Glasses Type 2 Part Number			512511
Projection System		0.65" Single Chip Digital Light Processing (DLP)	
Resolution		WXGA – 1280 x 800 dpi (1,024,000 Picture Elements)	
Liquid Crystal Panel Aspect Ratio		16:10	
White Light Output (Brightness) ¹		3,300 Lumens	
Color Reproduction		1,073,000,000 Colors (10 bit)/16,770,000 colors (8 bit)	
Contrast Ratio		Lamp Power Control On: 5000:1/Lamp Power Control Off: 2500:1	
Projection Screen Size		48" – 80"	
Projection Distance		4.6" for 48" diagonal image/9.8" for 80" diagonal image	
View Angle		More than 80 degrees	
Lamp Type		High Pressure Mercury (250W)	
Lamp Life		Standard Mode: 3,500 hours; Eco Mode: 5,000 hours	
Video Compatible Signal		NTSC, NTSC 4.43, PAL, PAL-M, PAL-N, PAL-60, SECAM, BW50/60Hz HDMI	
Analog RGB Compatible Scanning Frequency ²	Horizontal	31 – 91 kHz	
	Vertical	52 – 100 Hz	
USB Memory Compatible File Format ³		JPEG, MPEG1, MPEG2 (PS format only)	
Zoom		Supported, Digital	
Zoom Ratio		80% – 100%	
Zoom Focus		Manual	
Projection Modes		Tabletop, Wall Mount, Ceiling Mount	
Interface	RGB Input	Mini D-sub 15 pin x 1	
	Video Input	RCA 1 pin x 1	
	Video Output	None	
	Audio Input	Mini jack x 1	
	Audio Output	Mini jack x 1	
	HDMI In	HDMI x 1	
	USB	Type A x 1 USB 2.0 High Speed (JPEG/MPEG/MPEG2)	
	LAN	RJ-45 x 1 (10BASE-T/100BASE-TX/1000BASE-T Ethernet)	
Wireless LAN	IEEE 802.11 a/b/g/n compliant		
Control Port	USB Type miniB x 1 (RS-232C)		
3D Ready		Yes, Blu-ray 3D Projection	
Interactive Whiteboards		NA	Standard PJ Interactive Software + Optional eBeam Packages
Other Primary Features		AV Mute (Blank), Freeze, Re-size (Magnify), Auto Keystone Correction, Auto Brightness, Password Protection, Wall Color Mode, Key Lock, Kensington Lock, User Logo, Eco Mode, Carbon Meter, Closed Captioning, Color Universal Design, Presentation Timer, Power Timer, Sound Mode (Standard/Narration/Music), Simple DICOM	
Connectivity Features		Ad Hoc and Infrastructure Wireless Modes, Network Projection, Multi-screen Projection (1 PC to 4 Projectors), Projection Server Function, Projector Management, PLink, Slide Show Mode, Ricoh @Remote, Pentax-Ricoh Digital Camera Projection, Ricoh Web Image Monitor, Crestron RoomView compliant, AMX NetLinux compliant, Still Image Projection with DLNA Server, Wi-Fi, UpnP, Remote Whiteboard Sharing (PJ WX4141NI only), Ricoh Smart Presenter (with ad hoc connection), PC Free Presentation (JPEG/MPEG2 via USB port)	
Supported Languages		Arabic, Chinese (Simplified), Chinese (Traditional), Czech, Danish, Dutch, English, Finnish, French, German, Greek, Hungarian, Indonesian, Italian, Japanese, Korean, Norwegian, Polish, Portuguese, Romanian, Russian, Spanish, Swedish, Thai, Turkish	
Supported OS	Network Projection	Available with Quick Projection or other system. For PJ WX4141NI, in interactive mode image cannot project via the network as it may affect performance.	
	Network Utility	Windows XP SP3 or later (Home/Professional); Windows Vista SP2 or later 32/64bit (Ultimate/Business/ Home/Premium/HomeBasic); Windows 7 32/64bit (Ultimate/Enterprise/Professional/ HomePremium); Windows 8 32/64bit (Standard/Professional/Enterprise); Mac OS X 10.6 – 10.8	
	JPEG Conversion Tool	Windows XP SP3 or later (Home/Professional); Windows Vista SP2 or later 32/64bit (Ultimate/Business/ Home/Premium/HomeBasic); Windows 7 32/64bit (Ultimate/Enterprise/Professional/ HomePremium); Windows 8 32/64bit (Standard/Professional/Enterprise)	
	Projector Management Utility	Windows XP SP3 or later (Home/Professional); Windows Vista SP2 or later 32/64bit (Ultimate/Business/ Home/Premium/HomeBasic); Windows 7 32/64bit (Ultimate/Enterprise/Professional/ HomePremium); Windows 8 32/64bit (Standard/Professional/Enterprise)	
	Interactive Drawing Software	NA	Windows XP SP3 or later 32bit (Home/Professional); Windows 7 SP1 or later 32/64bit (Ultimate/Enterprise/Professional/ HomePremium); Windows 8 32/64bit (Standard/Pro/Enterprise)
Built-in Speaker		2W Mono	
Dimensions (WxDxH) (excluding protrusions)		10.1" x 5.7" x 8.7" (257 x 144 x 221 mm)	
Weight		Approx. 6.6 lb. (3.0 kg)	
Power Consumption	While Operating	Less than 312W	
	Eco Mode	Less than 208W	
	Standby Standalone	Less than 0.21W	
	Standby Wired LAN	< 0.48W	
	Standby Wired LAN + Wireless LAN	< 0.78W	
Fan Noise		38 dB Standard Mode/32 dB Low Power Mode	
Operating Environment		Temperature: 41°F to 95°F (5°C to 35°C); Humidity: 30% to 70% (no condensation)	
Power		100 V – 240 V, 50/60 Hz	
Accessories Packaged with Projector	Cables	RGB Cable (3m) and 3-pin Power Cord (3m)	
	CD-ROM	Operating Instructions, Network Utility, JPEG Conversion Tool, Projector Management Utility	
	Soft-side Carrying Case	Supplied	
	Remote Control	Standard Handheld	
	Interactive Kit	NA	Digital Pen, Module for PC, Chargeable Battery, USB Cable (for power charge), Interactive Software

1: Overall mean values for product at time of shipping are indicated in accordance with the JIS X6911-2003 data projector specification format. 2: Pre-set to this range of supported signals. Signals not present by not display even if they are within this range. 3: When using the USB terminal for computer-free presentations, there is no guarantee images will display. They may not display because of the file.

Warranty: The Ricoh PJ Series is under warranty against defects for a period of three years from the date of purchase. Consumables are under warranty for a period of 90 days from the date of purchase or until depleted, whichever comes first. Please refer to warranty documents shipped with the product for more details.

For maximum performance and yield, we recommend using genuine Ricoh parts and supplies.



www.ricoh-usa.com

Ricoh Americas Corporation, 70 Valley Stream Parkway, Malvern, PA 19355, 1-800-63-RICOH
 Ricoh® and the Ricoh Logo are registered trademarks of Ricoh Company, Ltd. All other trademarks are the property of their respective owners. ©2013 Ricoh Americas Corporation. All rights reserved. The content of this document, and the appearance, features and specifications of Ricoh products and services are subject to change from time to time without notice. Products are shown with optional features. While care has been taken to ensure the accuracy of this information, Ricoh makes no representation or warranties about the accuracy, completeness or adequacy of the information contained herein, and shall not be liable for any errors or omissions in these materials. Actual results will vary depending upon use of the products and services, and the conditions and factors affecting performance. The only warranties for Ricoh products and services are as set forth in the express warranty statements accompanying them.

