

Savin®

Savinfax 3730

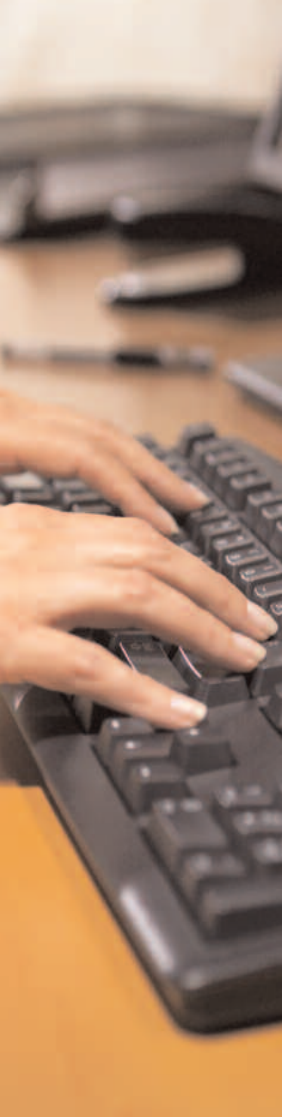
Facsimile

FAX >

COPY >

SIMPLE >

VERSATILE >

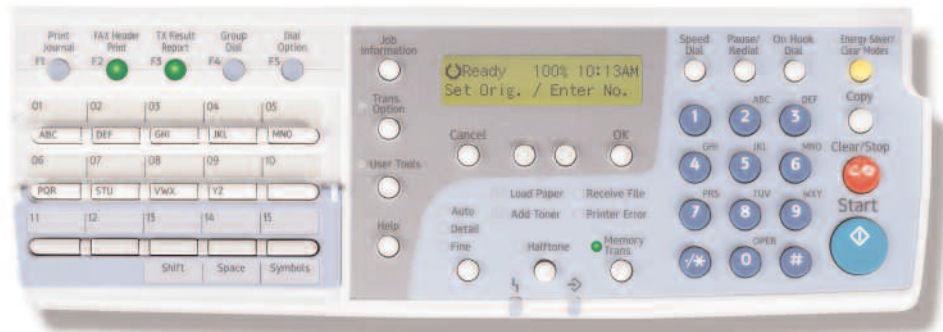


Productive fax technology with versatile copying.



A simple, easy-to-use facsimile system that enhances your productivity.

In any organization, you need productive document communication systems to maximize efficiency and keep workflow moving. For independent businesses or smaller workgroups, cost-efficiency is equally important. The Savinfax 3730 is a versatile yet affordable fax system that meets both needs. This powerful system combines essential fax features with convenience copying—so it can handle a wide range of jobs. Its compact footprint allows you to place it with ease, and its user-friendly design ensures smooth operation, even for first-time users.



Perform any fax, copy or print task with ease and convenience using the system's simple, intuitively designed control panel.

Superior versatility

To help you complete every office task quickly and easily, the Savinfax 3730 offers standard G3 faxing and 15 page-per-minute digital copying, as well as 15 page-per-minute printing via the Printer Option.

- Expect outstanding 600 dpi output quality for incoming fax documents, digital copies or printed files.
- With the optional Printer Controller, choose from PCL 5e, PCL 6 and PostScript 2 compatibility to ensure superior printing.

Exceptional efficiency

Whether you are faxing, copying or printing, the Savinfax 3730 offers the convenient, time-saving features you need to complete your document tasks quickly and move on to more critical activities.

- Quickly distribute documents anywhere in the world with a 33.6 Kbps Super G3 Modem,

featuring a 3.0 seconds-per-page transmission speed that helps minimize long-distance costs.

- Ensure flawless, unattended transmission of contracts, proposals and other large, multi-page documents with the 50-sheet Automatic Document Feeder, which achieves scan rates as fast as 2.8 seconds-per-page.
- With standard 8 MB fax memory (640 pages) and a 12-hour battery backup, mission critical documents are stored if paper trays are empty or a power loss occurs.
- Memory Transmission enables users to scan fax documents, walk away with the originals, and allow the Savinfax 3730 to take over. It waits for the line to be free if the fax was already in use, or redials if the receiver was busy—all without user intervention.
- Speed transmission even more with Parallel Memory Transmission, which dials and starts sending your fax as soon as you scan the first page.

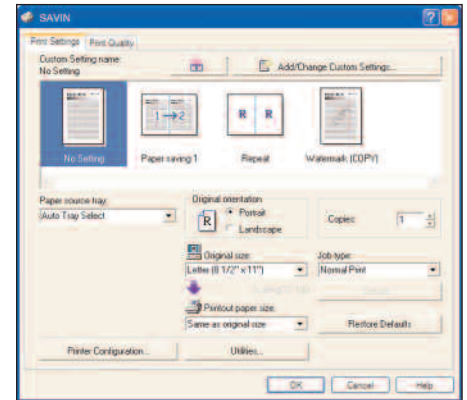
Savinfax 3730 Facsimile

FAX >

COPY >

SIMPLE >

VERSATILE >



Expand functionality with the Printer Option.



Print or copy onto labels, overhead transparencies, postcards and other unique stocks with the 100-sheet Bypass Tray.

Intuitive, user-friendly operation

The Savinfax 3730 features simple operation and straightforward design, so it is easy for users to navigate the system's wide variety of functions.

- Find exactly what you need with an easy-to-read Control Panel that guides you through any function.
- Simplify complex functions—such as transaction journal printing or duplex faxing—by assigning them to one of five programmable one-touch User Function Keys.
- Keep informed of the status of the Savinfax 3730 at-a-glance with Status Indicator Lights. Green indicates a transmission or reception is in process, while red indicates a communication error or the need to replace paper or toner.
- Send fax documents to your most frequently called recipients with one-touch convenience using 30 Quick Dials and 100 Speed Dials.

Compact, affordable design

In its relatively small footprint, the Savinfax 3730 offers just as much versatility as many larger fax systems—yet it fits easily in space-restricted areas.

- Maximize productivity with a total paper capacity of up to 850 sheets (with all options).
- Reduce cost-per-page and simplify supply replacement with separate toner and developer units.

Your Environmental Partner

Savin continues its long-standing commitment to developing office solutions with environmentally friendly and superior energy- and supply-saving features, without compromising productivity, including:

- Power-Saving Sleep Mode
- Duplex and Combine Copy Modes
- Minimal Ozone Emissions
- Restriction of Hazardous Substances Compliant (RoHS)



FAX >

COPY >

SIMPLE >

VERSATILE >

SPECIFICATIONS

Type	Desktop Facsimile
Recording Method	Laser
ITU-T Compatibility	Group 3 (V.34); ECM
Modem Speed	33.6 Kbps with Auto Fallback
Maximum Transmit Speed	3 seconds*
Data Compression	MH/MR/MMR/JBIG
Scan Speed	2.8 seconds-per-page**
(standard resolution)	
Dual Access	Standard
Standard Document Memory	8 MB (640 pages**)
Optional Document Memory	40 MB (1,500 pages**)
AutoDialer	30 Quick Dials, 100 Speed Dials, 5 Groups
User Function Keys	5 Dedicated Keys
Document Memory Backup	12 Hour (standard memory)
Auto Document Feed Capacity	50 sheets
Maximum Document Width/Scan Width	8.5"/8.4"
Document Length	23.7"
Scan Resolution	Standard: 200 x 100 dpi Detail: 200 x 200 dpi Fine: 200 x 400 dpi
Halftone	64 shades of gray with Error Diffusion
Maximum Print Speed	15 pages-per-minute
Maximum Print Resolution	600 dpi
Resolution Enhancement	Super Smoothing HQ™
Maximum Recording Width	8.4"
Maximum Recording Paper Size	8.5" x 14"
Standard Paper Capacity	250-sheet Cassette Tray 100-sheet Bypass Tray
Optional Paper Capacity	500 sheets
LCD Display Size	2 Lines (22 Characters)
Power Consumption	Energy Saver Mode: 1.2W and lower (without options)
Power Requirements	115 VAC, 60Hz
Environment	59 to 77°F, 30 to 70% RH
Dimensions (WxDxH)	17.6" x 19.5" x 16.2" (without options)
Weight	40.8 lbs. (without options)
Optional PFU (WxDxH)	17.0" x 16.1" x 5.5"
Weight	10.6 lbs.

GENERAL FEATURES

Auto Collation
 Auto Document
 Auto Document Feeder
 Auto Start Initial Setup
 Clock With Auto Daylight Savings Time
 Direct Fax Number Entry
 Dual Access
 Energy Saver Mode
 Fax Number Entry Before Loading Document
 File List
 Group Dial
 Group Dial List Report
 Halftone with Error Diffusion
 Help on Demand

GENERAL FEATURES (Continued)

Keystroke Programs
 Label Registration for Quick/Speed Dials
 LCD Prompts
 Memory Storage Report
 Ozone Emission-Free
 Personal Codes and Code List Report
 Pin Code Security
 Print Quick Dial Labels
 Program List Report
 Quick Dial Keys and Quick Dial List Report
 Remaining Memory Indicator
 Resolution Control
 Restricted Access
 Scanner Cleaning Notification
 Specified Cassette Selection List Report
 Speed Dial Codes and Speed Dial List Report
 Telephone Connection
 Telephone Directory
 Usage Counter
 User Function List Report
 User Parameter List Report
 Wild Card

COMMUNICATION FEATURES

Answering Machine Interface
 Automatic Fax/Tel Change
 AI Redial
 Busy Tone Detection
 Chain Dialing
 Communication Failure Report
 Distinctive Ring Detection
 Error Correction Mode
 Error Report
 Monitor Speaker
 On Hook Dialing
 Power Failure Report
 Pulse/Tone Selection
 Redial (Auto/Manual)
 Shortened Protocol

TRANSMISSION FEATURES

Batch Transmission
 Blank Document Detection
 Closed Network
 Confidential Transmission with ID
 Fax Header (TTI)
 Forwarding
 Immediate or Memory Transmission
 Label Insertion
 Memory Transmission Immediate Stop
 Memory Transmission Result Report
 Page Count
 Page Retransmission
 Quick (Parallel) Memory Transmission
 Send Later
 Serial Broadcasting (Immediate and Later)
 Transmission Confirmation Report
 Transmission Result Report

COPY FEATURES

Copy up to 99 copies
 Copy at 15 pages-per-minute

RECEPTION FEATURES

Authorized Reception
 Auto or Manual Reception
 Closed Network
 Confidential Reception with ID
 Confidential Reception Report
 Continuous Polling
 Document Separation Mark (Checked)
 Memory Lock (All or By Address)
 Multi-Polling Reception
 Page Separation & Length Reduction
 Poll Later
 Polling Reception (With and Without ID)
 Reception Mode Selection (Auto/Manual)
 Reception Time Printing
 Specified Cassette Selection
 Substitute Reception

OPTIONS

Feature (Memory) Expander Card Type 300 (40 MB) (non volatile)
 Telephone Handset Type 1018
 Cabinet Stand
 500-sheet Paper Feed Unit

*Approximately 3 seconds-per-page at 33.6 Kbps is dependent on optimal line quality, and customer performance may vary by location. Current systems used by the Public Switched Telephone Network (PSTN) generally support 28.8 Kbps modem speeds or lower.

**Based on ITU-T Test Chart #1 in standard resolution.

