

# SAVIN®

# 5100WD/7140WD

Wide Format

PRODUCTIVE > RELIABLE > FAST > HIGH-VOLUME > **COLOR** >



**A high-volume, high-speed system  
with built-in color scanning.**

## High volume, color scanning, fast output. Everything you need for maximum productivity.

SAVIN® 5100WD and 7140WD Wide Format Digital Imaging Systems allow for fast printing even as you capture, share and save all of your day-to-day hard-copy document processes—color markups, edits, penciled-in changes and as-builts—into your ever-changing project workflow. The Savin 5100WD and 7140WD Wide Format Digital Imaging Systems are truly high productivity tools that can help you work smarter, collaborate easier, share faster and finish your projects on-time and on-budget.



The large, LCD touch-panel display makes operation simple and intuitive.

### Built-In Productivity

Add up the fast output speed, user simplicity and smart engineering of the Savin 5100WD and 7140WD Wide Format Digital Imaging Systems, and you get systems that will be the workhorse in your reprographic area for years to come.

- Jump-start your workflow productivity with output speeds up to 10 or 14 documents per minute.
- Share the productivity from day one, thanks to the redesigned, super-wide color LCD operation panel.
- Reduce paper and toner usage by previewing document thumbnails before printing or scanning.
- Simplify and enlarge displays with the touch of a button for easier walkup use.
- Change paper and toner in a snap—clear jams, too—through the easy-to-use front-loading drawers and clamshell engineering.

## Streamline Your Workflow

Whether you use the Savin 5100WD and 7140WD Wide Format Digital Imaging Systems with a dedicated professional operator, have walkup users or work from a remote PC, you can configure exactly the system you need to optimize your unique workflow.

- Eliminate tedious document updating by capturing as-builts, handwritten, on-site changes and color markups, and then integrating them with satellite imagery, photographs and maps to create complete bid sets.
- Create and distribute documents with a comprehensive selection of Scan-to options.
- Scan project documents directly into an electronic plan room for easy viewing by other architects, engineers or contractors.

- Simplify document access by temporarily storing documents on the 320 GB (160 GB x 2) “Document Server” and view them on the control panel or your PC for reprinting, as needed.
- Increase your ability to handle high-output volume with optional front and back multi-stackers.

## Manage Your System Remotely

- Use WebImageMonitor to view documents in the Document Server, monitor supply levels, check job details, assign e-mail notification to key team members, remotely cancel jobs and reboot the system from anywhere on the network.
- Use the Document Server to assemble job sets—remotely or at the system itself—from prints, copies and scans.
- Manage advanced security features, including Windows Authentication and PDF Encryption, to keep your documents safe at every stage of printing and distribution.

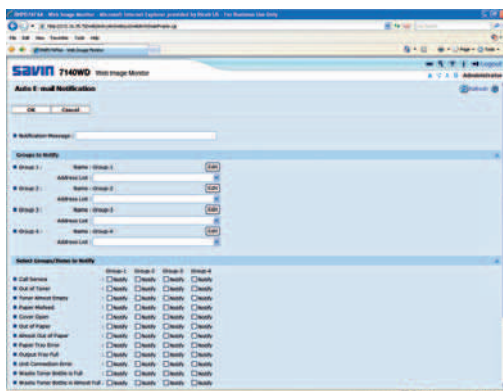
## Printer Controller: Simple, Versatile, Secure

A fast, powerful external print controller supports a variety of file formats in the CAD market. While the single footprint, embedded printer option easily handles the most common file formats and maximizes floor space.

## Built-In Printing

- Driver support for Windows—PostScript, HDI and a Web Print Tool to build job sets from HP-GL, TIFF and CALS file formats.
- The built-in security features included with the RPCS drivers provide peace of mind—Lock print, Hold print and Stored print.

## WebImageMonitor



WebImageMonitor allows you to view documents in the Document Server, monitor supply levels, check job details, assign e-mail notification to key team members, remotely cancel jobs, and much more—right from your desktop.

## Easy Access



Change paper and toner in a snap—clear jams, too—through the easy-to-use front-loading drawers and clamshell engineering.

# 5100WD/7140WD Wide Format Digital Imaging System

PRODUCTIVE > RELIABLE > FAST > HIGH-VOLUME > COLOR >

## Embedded Controller

### Client PC Drivers (Windows OS)

HDI (print directly from AutoCAD)  
RPCS (Windows based)  
Postscript (PDF and PostScript files)  
Web Print Tool (CALs, HP-GL 1/2, TIFFs)  
(Browser based)



### Client PC Drivers (Mac OS)

HDI (print directly from AutoCAD)  
RPCS (Mac based)  
Postscript (PDF and PostScript files)  
Web Print Tool (CALs, HP-GL 1/2, TIFFs)  
(Browser based)



5100WD/7140WD

## Scanning: Built-In

Changes and additions or “redlines” are a fact of life for architects, engineers and contractors. The Savin 5100WD and 7140WD Wide Format Digital Imaging Systems let you capture and distribute these changes—in color—through a built-in color scanner and the standard Scan-to functions.

### Built-In Color Scanner

- Minimize system footprint with the embedded color scanner.
- Scan documents of extensive sizes and types, including architectural drawings, sepias, blueprints, detailed maps, folded or wrinkled documents, oversized drawings, photos or posters with unrivaled speed and image quality.
- Scan your documents directly to e-mail, SMB, Folder, FTP, URL, NCP and Document Server.

## Built to Last

The Savin 5100WD and 7140WD Wide Format Digital Imaging Systems are tough and durable Savin products, designed to be a long-term investment for your organization—even in the most demanding environments.

- Count on the Savin 5100WD and 7140WD’s durable materials and reliable engine design to handle monthly volumes comparable to much higher priced products.
- Maximize your Total Cost of Ownership (TCO) by investing in a system with an exceptionally long life expectancy.

## The Total Green Office Solution

Savin continues its long-standing commitment to developing office solutions with environmentally friendly and superior energy- and supply-saving features, without compromising productivity.





**Built-in color scanner captures color markups in-house**

**Clamshell design simplifies system access**

**Toner cartridge and paper trays are placed for easy, one-step replacement or re-stocking**

**Front copy exit tray stacks up to 99 D-size documents for continuous copying**

**Original output tray holds up to 50 D-size originals for minimal interruptions when making copies**

**Color LCD touch-panel interface makes walk-up operation easy and intuitive**

**Front-loading drawers enable system placement even in tight quarters and facilitates rapid clearance of paper jams**

**Optional front and back multi-stackers expand flexibility and high-volume capabilities (not shown)**

## SPECIFICATIONS

Configuration	Console
Copy/Printing Process	Electro-photographic printing
Paper Source	2 roll paper feeder (standard) 2 roll paper feeder (optional)* 2 drawer paper cassette trays (optional)* <small>*Cannot be installed simultaneously</small>
Warm-Up Time	Less than 120 Seconds
First Copy	10 seconds (D-size)
Copying Speed	7140WD: 14 ppm (D-size); 5100WD: 10 ppm (D-size)
Resolution	600 dpi x 600 dpi
Grayscale Scanning	256 levels
Grayscale Printing	2 levels
Reduction/Enlargement	18 presets; 25% to 400% by 0.1% increments
Multiple Copies	1 to 99 (ten key input)
Cutting Method	Synchronized, preset cut, variable cut
Memory Capacity	1,024 MB (Copy/Printer); 2,048 MB (required with scanner option)
Standard Hard Drive	320 GB (160 x 2)
Original/Copy Size	Maximum: 7140WD: 36" x 1180" (98.4 ft.); 5100WD: 36" x 590" (49.2"); Minimum: 8.5" x 8.5"; 36" x 78" bypass
Original Exits	Rear (upper), Original rear exit (straight through), Original upper exit
Copy Exits	Front: 99 Sheets (Plain Paper D-size LEF) Back: 10 Sheets (Plain Paper D-size LEF)
Power Source	208 – 240V 15A 60Hz (NEMA 6 – 20R)
Max Power Consumption	3kW per hour
Dimensions (WxDxH)	49.2" x 29.7" x 47.2"
Weight	507 lbs.

## COPIER FEATURES

- 2 Drawer Cut Sheet Paper Tray (option)
- Auto Paper Selection (APS)
- Auto Reduce/Enlargement, User Auto Reduce/Enlargement, Preset Reduce/Enlargement, Zoom, Size Magnification, Directional Magnification
- Directional Size Magnification (percentage and mm/inch), Fine Magnification
- Electronic Sort
- Image Overlay, Format Overlay, Negative/Positive, Mirroring, Double Copy, Repeat Copy, Combine Images
- Job Interrupt
- Job Program (up to 10 jobs)
- Manage System and Security Settings, Document Server, Printer and Scanner Features
- Margin Adjustment
- Preset Stamps, User Preset Stamps, Date Stamp, Page Stamp
- Standard 320 GB Hard Disk Drive: Store Up to 3,000 Documents
- User Tools, Manage System and Security Settings, Document Server, Printer and Scanner Features

## COPIER OPTIONS

Paper Cassette Tray	2 drawer paper cassette; adjustable up to 18" x 24". Holds up to 250 sheets x 2 (17 lbs. – 20 lbs.)
Roll Feeder	2 roll feeder option; holds an additional 2 rolls (4 rolls total)
Roll Holders	2 holders, max roll diameter 3" core

## PRINTER OPTION TYPE W7140 (Option)

Controller Board	Embedded
Print Speed	7140WD: 14 ppm D-size LEF, 7 ppm E-size SEF; 5100WD: 10 ppm D-size LEF, 5 ppm E-size SEF
Print Resolution	Up to 600 dpi
HDD	320 GB (160 x 2) (Shared with other applications such as Copy/Scanner)
Supported File Formats	HP-GL, HP-GL2, HP-RTL, TIFF, PostScript/PDF, CALS, MS Office File Formats, JPEGs HDI Driver: DWG

## PRINT CONTROLLER FEATURES

- Auto Paper Select
- Combine Images
- Cut Mode
- Limitless Paper Feed
- Locked Print
- Output Tray Selection
- Reduce/Enlarge
- Build Job Sets from Multiple File Formats with Web Print Tools
- Stamping

## SCANNER OPTION TYPE W7140 (Option)

Controller Board	Embedded
Scan Speed	7140WD and 5100WD: 1.75 ips – 13 ips @ 600 dpi
Scan Resolution	150 dpi to 600 dpi; Twain: up to 1200 dpi
Scanner Features	Scan-to-Email, Scan-to-Folder, Network TWAIN, Scan-to-NCP, Scan-to-FTP, Scan-to-SMB, Scan-to-Document Server
Edit	Erase Border, Positive/Negative, Mirror Image
Preview	Full View: 18" x 24"; Section Preview: 36" x 48"
File Formats	Multi page TIFF, Single page TIFF, Multi page PDF, Single page PDF, Single page JPEG

## SCANNER FEATURES

- Authentication Modes
- Invert
- Mirror/Positive/Negative
- Multiple Scan Settings
- RGB (24 bit), Grey, B&W
- Rotation
- Scan Modes
- Scan Preview
- Scan-to-Archive
- Scan-to-Email
- Scan-to-Folder
- Scan-to-FTP
- Scan-to-NCP
- Scan-to-SMB